

2008
DESIGN
AWARDS

Honor:

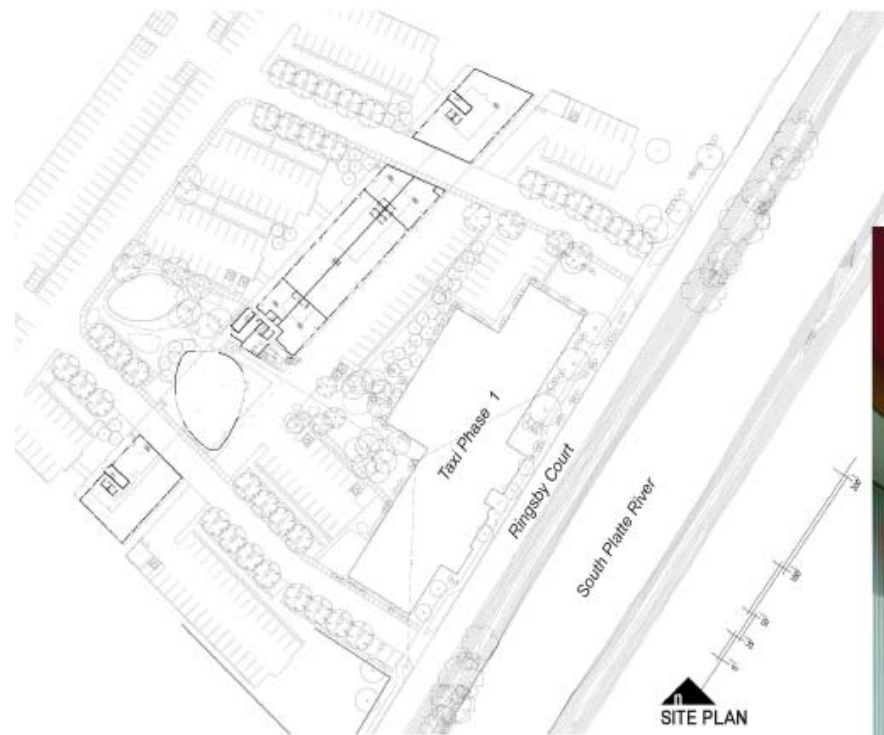
TAXI Phase 2

Alan Eban Brown Architects, David Baker & Partners,
Will Bruder & Partners and Harry Teague Architects



TAXI 2 SITE PLAN TOWER NOTCH LOOKING EAST

The TAXI 2 long bar building strikes an oblique angle to the South Platte River. Assigned Parking Alcoves infill Private Loop Street geometry. Landscaping is native and water conserving. Seen through the Yellow Cab Tower Guywire Notch, Bin Blocks and asphalt striping are ubiquitous. Site elements. The Notch cross axis connects pedestrian piazzas East-to-West.



2008 DESIGN AWARDS

Honor: **TAXI Phase 2**

Alan Eban Brown Architects, David Baker & Partners,
Will Bruder & Partners and Harry Teague Architects



**PARTIAL EAST
ELEVATION**
LOOKING NORTHWEST

Night Lighting emphasizes the hardscape-edged East Elevation and Business tenant fronts. The bright Elevator Lobby opens inside-out at the Guywire Notch, with Level 2-3 Bridge beyond. Galvanized Residential Balconies cantilever from the rusting facade above.



**2008
DESIGN
AWARDS**

Honor:

TAXI Phase 2

Alan Eban Brown Architects, David Baker & Partners,
Will Bruder & Partners and Harry Teague Architects





EAST SIDE
LOOKING WEST

Private Loop Street cuts into through the long bar building facade. An Urban Landscape pattern of street trees, galvanized pipe bollards, checkerboard asphalt striping, and designated Visitor Parking spaces follow the Loop. These features slow vehicle traffic and enhance the pedestrian friendly environment.

**2008
DESIGN
AWARDS**

Honor:

TAXI Phase 2

Alan Eban Brown Architects, David Baker & Partners,
Will Bruder & Partners and Harry Teague Architects





**WEST ELEVATION
DETAIL LOOKING EAST**

Viewed from the Northernmost Private Loop Street notch, a covered pedestrian Promenade tucks under the West Facade. Downspouts direct roof runoff into landscaped PLD (Pourous Landscape Detention) Swales. Galvanized plank "Bridges" cross Swales from Assigned Parking Alooves.

2008
DESIGN
AWARDS

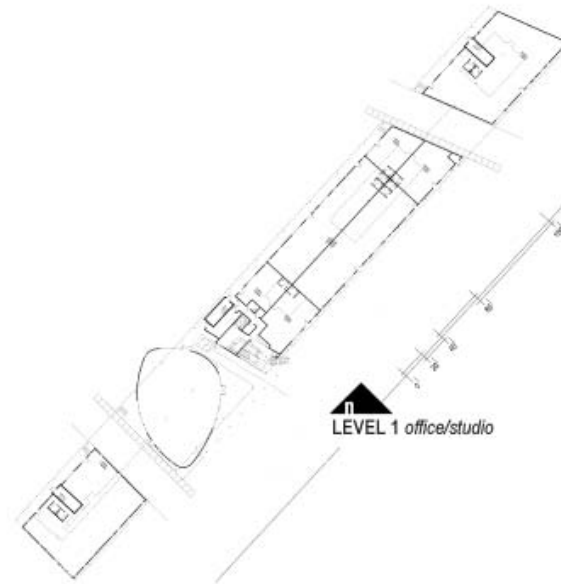
Honor:
TAXI Phase 2

Alan Eban Brown Architects, David Baker & Partners,
Will Bruder & Partners and Harry Teague Architects



**LEVEL 1 OFFICE
STUDIO PLAN
BUSINESS UNIT #103,
LOOKING NORTHWEST**

Representative of Ground Level tenants, a Video Production Company interior shows exposed SMEP systems, finish materials, multiple source filtered natural light, and overlooking Mezzanine. Tenant Services and Amenities such as Mail, Directory and Fitness Center occur at this Level.



**2008
DESIGN
AWARDS**

Honor:
TAXI Phase 2

Alan Eban Brown Architects, David Baker & Partners,
Will Bruder & Partners and Harry Teague Architects





**RESIDENTIAL
COMMON AREA
HALLWAY**
LOOKING NORTH

3D A&E document modeling assisted trunk utility (domestic water, natural gas, electrical, lighting, communications, fire protection, air handling) coordination on a shared Unistrut rack framework. Personalized Residential Entry Alcoves are recessed on each side.

**NORTH
EGRESS
STAIR**
LOOKING WEST

A modular concrete forming system constructed offsite in stacking sections is the finished all-steel Stair assembly. T-5 industrial fluorescent fixtures, with colored polycarbonate Tube-Guards are a building lighting standard.

2008
DESIGN
AWARDS

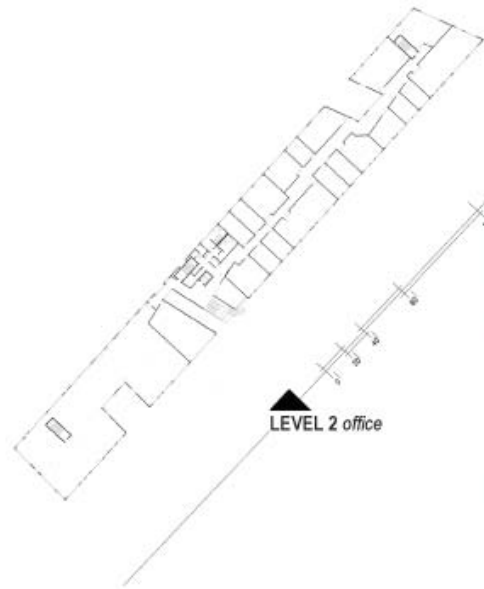
Honor:
TAXI Phase 2

Alan Eban Brown Architects, David Baker & Partners,
Will Bruder & Partners and Harry Teague Architects



LEVEL 2 OFFICE
STUDIO PLAN
UPPER ELEVATOR LOBBY
LOOKING SOUTHEAST

Common Area spaces twist and turn around a rhythmic W^F steel post-and-beam grid. The cold-rolled steel Lobby Star is an introduction to TAXI 2 interior finishes and detailing, as is the provocative color palette.



2008
DESIGN
AWARDS

Honor:

TAXI Phase 2

Alan Eban Brown Architects, David Baker & Partners,
Will Bruder & Partners and Harry Teague Architects





**LEVEL 2
COMMON AREAS
LOOKING SOUTH**

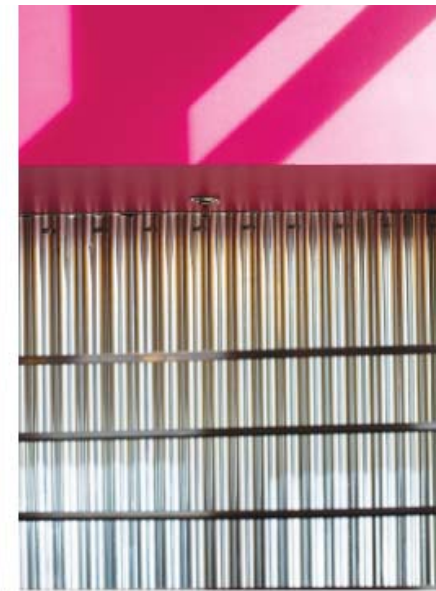
Filtered Natural Light in a double-loaded hallway, shifting objects (cable tray, strip lights), and varied Common Area wall surfaces (black steel storefronts, accent-painted GWB, clear-sealed Wheatsheet, clear polycarbonate panels) animate the lengthy interior circulation network.

**2008
DESIGN
AWARDS**

Honor:
TAXI Phase 2

Alan Eban Brown Architects, David Baker & Partners,
Will Bruder & Partners and Harry Teague Architects





**LEVEL 1, 2 and 3
COMMON AREA DETAILS:**

Examples of Common Area interior detailing are in the shared Multi-Media Conference Room (view South to city skyline) with operable Common Area wall, CMU Elevator Shaft Walls and a variety of direct-screwed panels, galvanized corrugated metal, Wheatsheet composition board, and extruded polycarbonate sheeting.

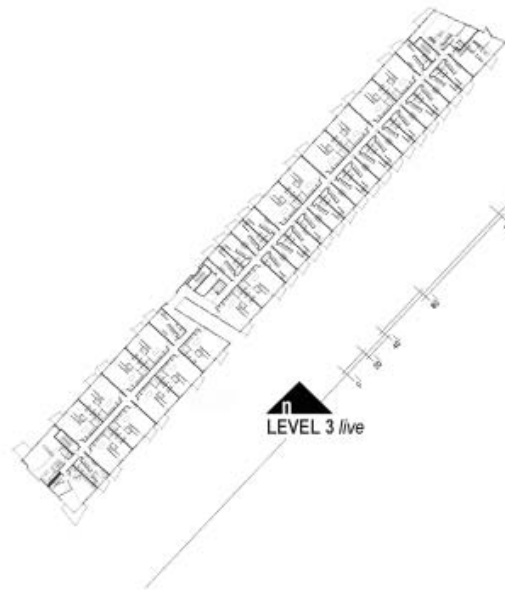
2008
DESIGN
AWARDS

Honor:

TAXI Phase 2

Alan Eban Brown Architects, David Baker & Partners,
Will Bruder & Partners and Harry Teague Architects





**LEVEL 3
RESIDENTIAL PLAN
CUSTOM CORNER RESIDENCE
LOOKING WEST**

44 Residential Penthouse Dwelling Units run the entire 550 ft. building length. 23 1br "crashpads", 17 2br "doublewides" and 4 "custom corner" units are central hallway accessed. Exposed steel structure, decking, steel trowelled concrete Floors, poly and acrylic accent Floors, complement the necessary rated GWB paint surfaces.

**2008
DESIGN
AWARDS**

Honor:
TAXI Phase 2

Alan Eban Brown Architects, David Baker & Partners,
Will Bruder & Partners and Harry Teague Architects





**LEVEL 3 COMMON
AREA BRIDGE
2BR RESIDENTIAL UNIT**

Bridge detailing, color, natural light and views are a further example of interior Common Area placemaking. 2-Story Residential Units respond to animated exterior fenestration. Rated GWB surfaces are complemented by exposed metal framing, cold-rolled steel Stairs, and transparent acrylic and polycarbonate sheeting.

**2008
DESIGN
AWARDS**

Honor:
TAXI Phase 2

Alan Eban Brown Architects, David Baker & Partners,
Will Bruder & Partners and Harry Teague Architects





2008 DESIGN AWARDS

Honor:

TAXI Phase 2

Alan Eban Brown Architects, David Baker & Partners,
Will Bruder & Partners and Harry Teague Architects

